

Monthly Weather Summary in Thailand August 2020

Thailand's weather in August 2020 was dominated by the monsoon trough laying across the northern and northeastern parts throughout the month. In addition, the intermittent active southwest monsoon prevailed over the Andaman Sea, Thailand and the Gulf of Thailand. Moreover, the tropical cyclones weakening from tropical storm "SINLAKU (2003)" which entered Thailand at Nan province on August 3 as tropical depression. These caused abundant rainfall over Thailand almost the month with gusty wind and flash flood in several places. However, the monsoon through moved northward to lie across Myanmar, Laos and upper Vietnam during August 24-30 and southwest monsoon which prevailed over Thailand was weakened during the mentioned period and caused decreasing rainfall over Thailand. Monthly rainfall was above normal in most parts of Thailand i.e. northern part 72.1 mm (32%), northeastern part 12.4 mm (5%), central part 9.1 mm (5%) and southern part (eastern coast) 14.8 mm (12%) while it was below normal in eastern part 68.1 mm (23%), and southern part (west coast) 172.8 mm (43%). Mean temperatures in Thailand was slightly above normal in all parts.

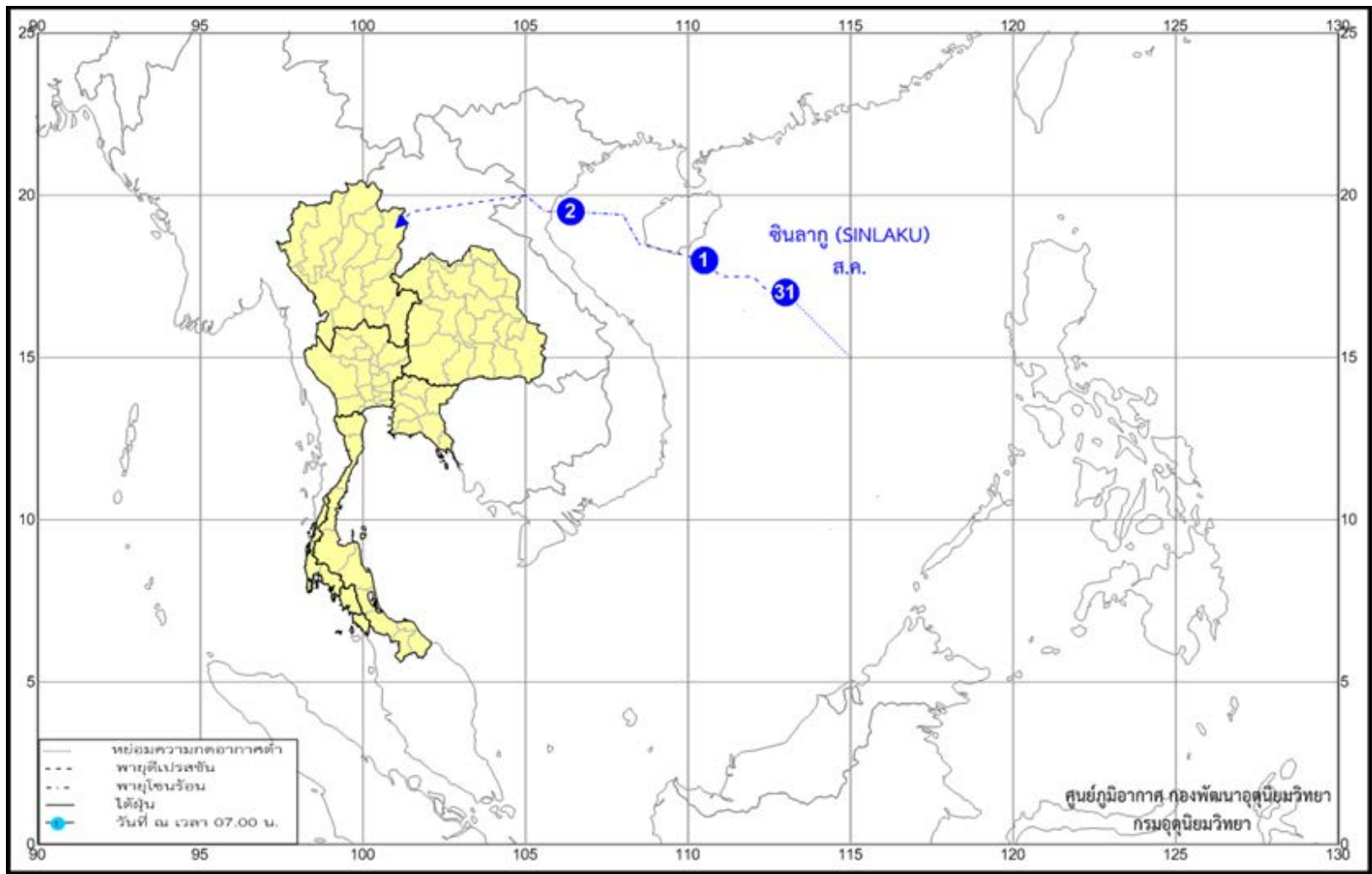
1 – 10 August: During early period, the monsoon trough lay across northern and northeastern parts toward the tropical depression over the coast of Hainan on August 1 which later intensified into the tropical storm "SINLAKU (2003)" over the Gulf of Tonkin and made landfall over upper Vietnam in the morning of August 2. It moved through Laos and downgraded into the tropical depression in the evening of the same day before entering Thailand over Nan province on August 3 at 04:00 A.M. and finally degenerated into the active low pressure cell covering upper northern part and Myanmar. Moreover, the monsoon trough lay across upper northern toward the low pressure cell over upper Vietnam during middle period after that it moved southward to lie across northern and northeastern parts toward the active low pressure cell over the South China Sea. In addition, the active southwest monsoon prevailed over Thailand and the Gulf of Thailand almost the period. These conditions caused plentiful of rainfall in upper Thailand especially in northern and northeastern parts that received heavy to very heavy rainfall in several areas during early period. The highest daily rainfall in upper Thailand was 350.4 millimeters at Mueang in Bueng Kan province on August 2. Flash flood was reported at Lampang, Nan, Uttaradit, Phayao, Chiang Rai, Chiang Mai, Phrae, Loei, Nong Bua Lam Phu, Udon Thani, Nakhon Phanom and Kalasin provinces on August 2 and at Uttaradit province on August 3 and at Chiang Rai province on August 4 and at Loei and Prachinburi provinces on August 6 and at Phayao and Nan provinces on August 7 and at Prachinburi province on August 10. Gusty wind was reported at Surin province on August 1 and at Amnat Charoen province on August 2 and at Saraburi province on August 4 and at Chantaburi province on August 6. In southern part, there was plentiful of rain mainly during early and late period. Scattered to fairly widespread rain was observed in most of areas with isolated heavy to very heavy rainfall during early and late periods. The maximum daily rainfall in southern part was 129.4 millimeters at Mueang in Ranong province on August 1. Gusty wind was reported at Surat Thani province on August 1 and at Phang-nga, Ranong, Phuket, Nakhon Si Thammarat and Chumphon provinces on August 2 and at Song Khla province on August 3 and at Phang-nga province on August 4 and at Narathiwat province on August 5 and at Surat Thani province on August 8.

11 – 20 August: Under the influence of the moderate southwest monsoon prevailed over the Andaman Sea, Thailand and the Gulf of Thailand throughout the period, the southeasterly wind prevailed over the lower northeastern, eastern parts and the Gulf of Thailand during early period and the monsoon trough lay across northern and northeastern parts toward the low pressure cell covered upper Vietnam during late period. These conditions caused plentiful of rainfall in upper Thailand especially in northern and northeastern parts that received fairly widespread rain almost the whole period. Whereas, the central and eastern parts received fairly widespread rain mainly during the first half of the period with heavy to very heavy rainfall in some areas. The maximum daily rainfall in upper Thailand was 193.0 millimeters at Khlung in Chantaburi province on August 12. Flash flood was reported at Nan, Chantaburi and Trat provinces on August 13 and at Udon Thani province on August 14 and at Kalasin province on August 16. In southern part, fairly widespread rain during early period then decreasing in rainfall with isolated to scattered rain and heavy to very heavy rainfall in some areas. The highest daily rainfall in southern part was 101.7 millimeters at Ko Samui in Surat Thani province on August 19.

21 – 31 August: The active monsoon trough lay across northern and upper northeastern parts during early period after that it moved northward to lie across Myanmar and Laos toward the low pressure cell over upper Vietnam. On the last day of the period, the mentioned monsoon trough moved southward to lie across the lower northern, upper central and lower northeastern part. In addition, the southwest monsoon prevailed over the Andaman Sea, Thailand and the Gulf of Thailand throughout the period. These conditions caused fairly widespread rain with heavy to very heavy rainfall over upper Thailand during early period then decreasing in rainfall. On the last day of the period, increasing rainfall in most parts of Thailand with fairly widespread rain especially central part that received heavy rainfall in several areas and very heavy rainfall in some areas. The maximum daily rainfall in upper Thailand was 200.0 millimeters at Tha Pla Agricultural Office in Uttaradit province on August 21. Flash flooding was reported at Nan, Phare, Chiang Mai, Lampang, and Phayao provinces on August 21 and at Uttaradit, Lamphun and Mae Hong Son provinces on August 22 and at Sukhothai and Tak provinces on August 23 and at Pitsanulok province on August 26. Landslide occurred at Nan province on August 21 and at Mae Hong Son province on August 22 and at Chinag Mai province on August 23. In southern part, isolated to scattered rain was reported along the east coast except for fairly widespread rain on the first and last days of the period. For west coast, there was isolated to scattered rain during early and middle period then increasing rainfall to fairly widespread rain. Heavy to very heavy rainfall was reported mainly along east coast and the highest daily rainfall in southern part was 104.2 millimeters at Mueang and Nong Chik in Pattani province on August 23.

Note : Rainfall, temperatures and natural disasters in this report were updated up to August 5, 2020.

Climatological Center
Meteorological Development Division
Meteorological Department



Track of tropical storm entering Thailand in August 2020

Monthly Current Report
Rainfall and Accumulative Rainfall
August 2020

Northern Thailand

Station	Temperature (°c)		Rainfall (mm)		Accumulative rainfall (mm) Since 1 January	
	Mean	Above or below normal	Actual	Above or below normal	Actual	Above or below normal
Chiang Rai	26.8	0.3	386.5	28.1	912.3	-296.2
Mae Hong Son	27.1	0.2	407.6	168.3	820.2	-103.4
Phayao	27.1	0.4	202.3	-1.7	659.3	-103.3
Chiang Mai	27.6	0.8	389.0	172.1	736.4	4.6
Tha Wang Pha	27.3	0.4	446.0	148.2	949.4	-125.2
Nan	27.6	0.3	411.9	138.7	1045.7	112.1
Lamphun	27.5	0.2	338.3	165.6	815.1	181.1
Lampang	27.9	0.5	232.3	46.0	576.9	-122.2
Mae Sariang	26.8	0.6	201.1	-19.3	591.4	-222.4
Phrae	27.6	0.2	498.6	293.1	1163.6	362.7
Uttaradit	28.4	0.4	393.5	130.1	806.5	-174.1
Bhumibol Dam	28.6	0.5	158.5	46.5	384.9	-194.6
Tak	28.8	0.9	160.3	44.5	452.5	-134.2
Mae Sot	26.6	1.0	376.5	54.8	618.3	-532.2
Umphang	25.3	1.0	277.9	29.5	652.3	-375.3
Phitsanulok	28.6	0.5	265.0	17.4	752.8	-110.6
Lom Sak	27.8	0.5	228.7	30.6	777.5	34.9
Phetchabun	28.2	0.9	166.0	-33.0	731.9	-86.0
Wichian Buri	28.4	0.3	276.7	67.5	704.8	-113.5
Kamphaeng Phet	29.0	1.2	85.9	-84.6	369.3	-426.1
Over the area	27.7	0.6	295.1	72.1 32%	726.1	-121.3 -14%

Northeastern Thailand

Station	Temperature (°c)		Rainfall (mm)		Accumulative rainfall (mm) Since 1 January	
	Mean	Above or below normal	Actual	Above or below normal	Actual	Above or below normal
Nong Khai	28.0	0.5	661.7	338.5	1502.0	261.4
Loei	27.5	0.4	262.1	77.2	782.9	-71.0
Udon Thani	28.0	0.2	312.9	27.8	904.4	-171.2
Nakhon Phanom	27.3	0.3	363.2	-217.1	1069.2	-875.9
Sakon Nakhon	27.4	0.0	268.5	-89.4	1011.9	-313.9
Mukdahan	27.7	0.4	286.0	-64.7	770.0	-381.8
Khon Kaen	27.7	0.0	244.3	27.9	777.6	-99.5
Kosum Phisai	28.5	0.5	252.4	20.5	930.4	39.9
Roi Et	28.3	0.4	280.4	28.2	766.0	-231.6
Chaiyaphum	28.3	0.7	190.6	-5.6	780.0	32.9
Ubon Ratchathani	28.0	0.4	283.1	-20.2	960.4	-180.8
Tha Tum	28.4	0.2	184.1	-43.8	579.1	-397.5
Surin	28.1	0.5	209.3	-46.9	820.5	-197.5
Nakhon Ratchasima	28.6	0.5	236.1	78.9	906.2	235.9
Chok Chai	28.3	0.4	198.1	44.6	692.2	25.9
Nang Rong	28.0	0.2	224.6	42.9	998.6	218.8
Over the area	28.0	0.3	278.6	12.4 5%	890.7	-131.7 -13%

- NOTES :
- 1) Mean temperature is the average of daily dry-bulb temperature
 - 2) "T" is trace, rainfall amount less than 0.1 mm.
 - 3) "blank" is incomplete data.
 - 4) Temperature and rainfall are preliminary data.

Monthly Current Report
Rainfall and Accumulative Rainfall
August 2020

Central Thailand

Station	Temperature (°c)		Rainfall (mm)		Accumulative rainfall (mm) Since 1 January	
	Mean	Above or below normal	Actual	Above or below normal	Actual	Above or below normal
Nakhon Sawan	29.3	0.9	153.5	-24.8	474.6	-252.7
Bua Chum	28.6	0.6	253.1	83.9	593.4	-88.3
Lop Buri	29.1	0.8	181.1	30.2	543.2	-125.1
Suphan Buri	29.4	0.9	75.0	-43.4	393.3	-111.2
Thong Pha Phum	27.3	1.0	315.7	-28.0	846.5	-496.2
Kanchanaburi	29.4	1.0	58.4	-39.9	474.9	-87.0
Bangkok Airport	29.3	0.5	196.4	25.5	837.2	-17.8
Bangkok Metropolis	29.4	0.6	288.2	68.9	901.6	-64.4
Over the area	29.0	0.8	190.2	9.1 5%	633.1	-155.3 -20%

Eastern Thailand

Station	Temperature (°c)		Rainfall (mm)		Accumulative rainfall (mm) Since 1 January	
	Mean	Above or below normal	Actual	Above or below normal	Actual	Above or below normal
Prachin Buri	28.9	0.6	290.8	-67.7	836.9	-439.4
Kabin Buri	28.2	0.5	294.0	3.6	917.0	-189.0
Aranyaprathet	28.7	0.9	170.1	-38.5	764.5	-113.5
Chon Buri	29.5	0.5	169.3	15.2	824.8	61.3
Ko Sichang	29.2	0.5	164.2	27.4	721.5	48.0
Pattaya	28.9	0.5	71.7	-25.9	582.0	-27.5
Sattahip	29.2	0.4	87.1	-21.9	773.9	72.7
Rayong	29.2	0.4	72.1	-60.2	1018.9	142.0
Chanthaburi	28.2	0.7	435.1	-62.1	1740.1	-397.6
Khlong Yai	27.5	0.5	589.6	-450.8	2271.5	-1421.0
Over the area	28.8	0.6	234.4	-68.1 -23%	1045.1	-226.5 -18%

- NOTES :
- 1) Mean temperature is the average of daily dry-bulb temperature
 - 2) "T" is trace, rainfall amount less than 0.1 mm.
 - 3) "blank" is incomplete data.
 - 4) Temperature and rainfall are preliminary data.

Monthly Current Report
Rainfall and Accumulative Rainfall
August 2020

Southern Thailand, east coast

Station	Temperature (°c)		Rainfall (mm)		Accumulative rainfall (mm) Since 1 January	
	Mean	Above or below normal	Actual	Above or below normal	Actual	Above or below normal
Phetchaburi	29.4	0.8	61.0	-31.3	366.5	-83.4
Hua Hin	29.1	0.6	41.5	-29.7	331.4	-148.0
Prachuap Khiri Khan	28.7	0.9	116.9	17.8	544.8	-50.2
Chumphon	28.1	1.0	127.1	-80.4	934.9	-96.7
Surat Thani	27.6	0.6	153.2	13.6	794.0	56.1
Ko Samui	28.7	0.5	156.3	45.4	901.3	89.6
Nakhon Si Thammarat	28.3	0.5	109.0	-20.8	1139.3	190.3
Songkhla	28.5	0.3	245.1	135.7	781.1	99.0
Hat Yai Airport	27.8	0.4	61.6	-51.4	625.4	-131.0
Pattani Airport	28.0	0.5	315.1	181.1	1200.3	483.4
Narathiwat	28.3	0.9	141.1	-17.2	895.3	-7.8
Over the area	28.4	0.6	138.9	14.8 12%	774.0	36.3 5%

Southern Thailand, west coast

Station	Temperature (°c)		Rainfall (mm)		Accumulative rainfall (mm) Since 1 January	
	Mean	Above or below normal	Actual	Above or below normal	Actual	Above or below normal
Ranong	27.7	0.9	520.5	-268.6	1543.8	-1255.8
Takua Pa	27.9	0.5	267.8	-277.2	1840.4	-401.3
Phuket	29.2	1.1	192.2	-94.6	1357.8	69.4
Phuket Airport	28.8	0.8	178.5	-151.3	1438.6	-8.7
Ko Lanta	28.8	0.6	180.2	-124.0	1422.8	104.6
Trang Airport	27.9	0.9	180.3	-94.8	936.9	-291.7
Satun	28.3	0.9	60.4	-198.9	1263.0	-38.7
Over the area	28.4	0.8	225.7	-172.8 -43%	1400.5	-260.3 -16%

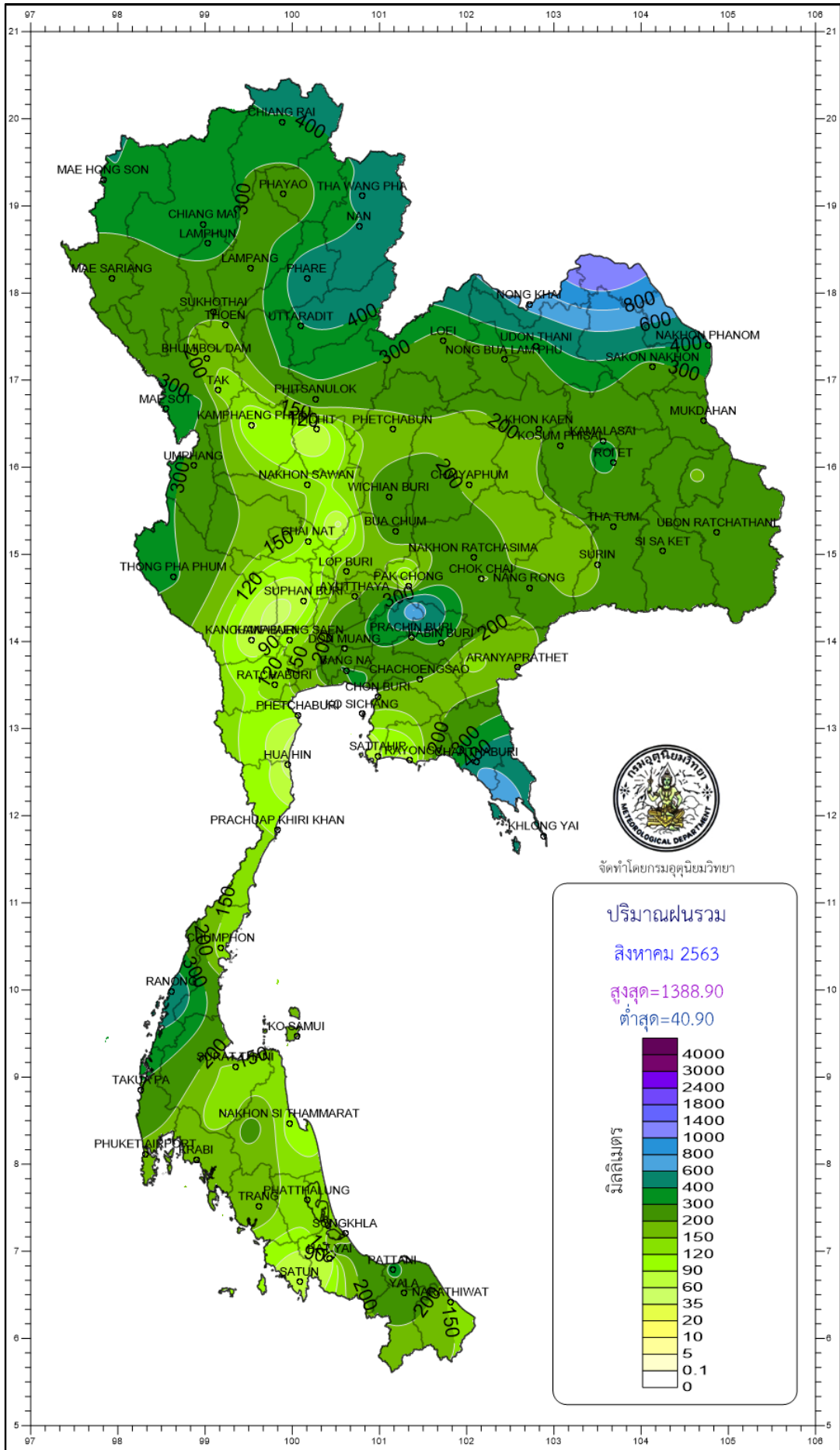
- NOTES :
- 1) Mean temperature is the average of daily dry-bulb temperature
 - 2) "T" is trace, rainfall amount less than 0.1 mm.
 - 3) "blank" is incomplete data.
 - 4) Temperature and rainfall are preliminary data.

Monthly Current Report

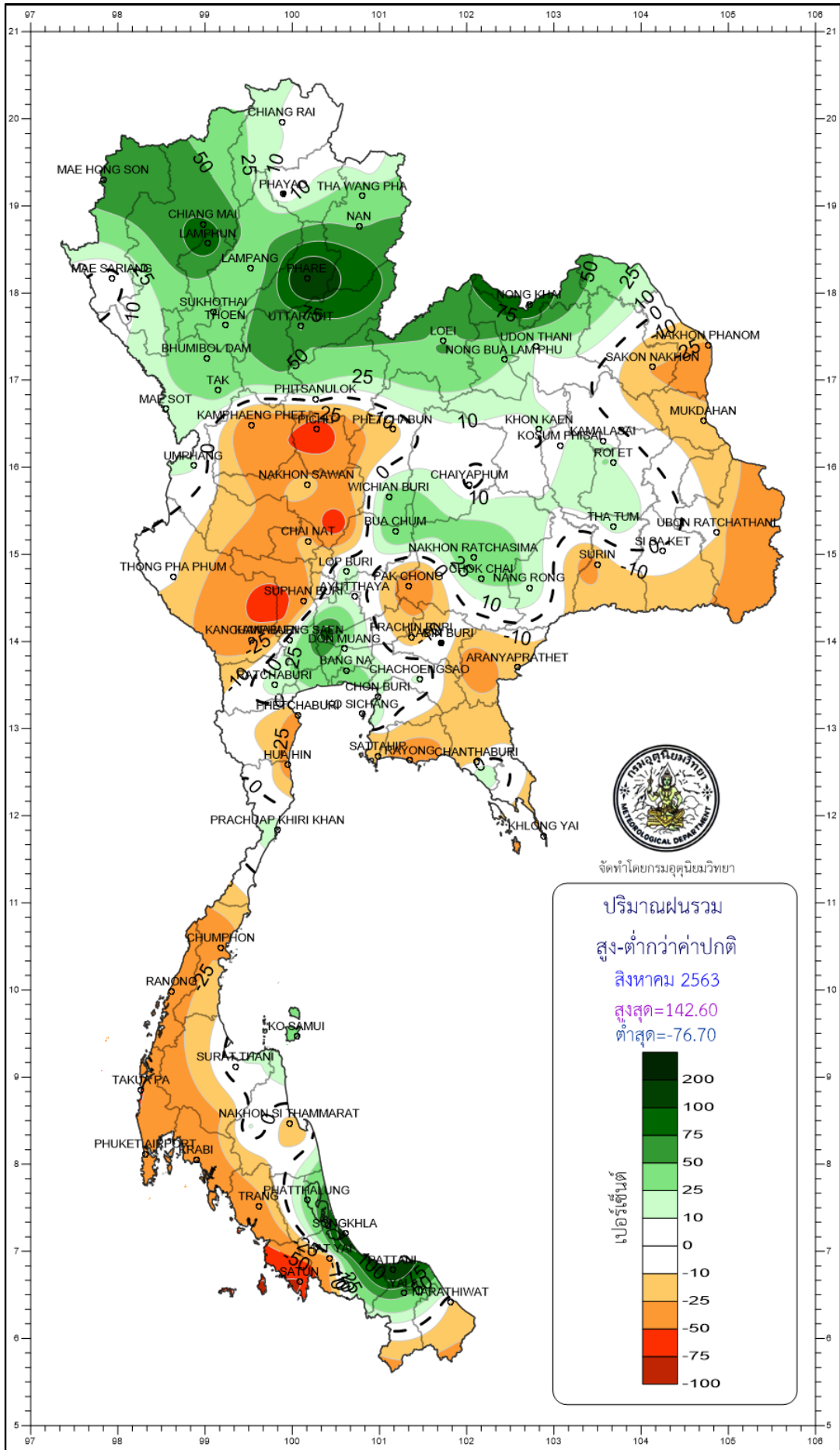
August 2020

Region	Station	Temperature (°c)		Rainfall (mm)		Accumulative rainfall (mm) Since 1 January	
		Mean	Above or below normal	Actual	Above or below normal	Actual	Above or below normal
North	Chiang Rai	26.8	0.3	386.5	28.1	912.3	-296.2
	Mae Hong Son	27.1	0.2	407.6	168.3	820.2	-103.4
	Phayao	27.1	0.4	202.3	-1.7	659.3	-103.3
	Chiang Mai	27.6	0.8	389.0	172.1	736.4	4.6
	Tha Wang Pha	27.3	0.4	446.0	148.2	949.4	-125.2
	Nan	27.6	0.3	411.9	138.7	1045.7	112.1
	Lamphun	27.5	0.2	338.3	165.6	815.1	181.1
	Lampang	27.9	0.5	232.3	46.0	576.9	-122.2
	Mae Sariang	26.8	0.6	201.1	-19.3	591.4	-222.4
	Phrae	27.6	0.2	498.6	293.1	1163.6	362.7
	Uttaradit	28.4	0.4	393.5	130.1	806.5	-174.1
	Bhumibol Dam	28.6	0.5	158.5	46.5	384.9	-194.6
	Tak	28.8	0.9	160.3	44.5	452.5	-134.2
	Mae Sot	26.6	1.0	376.5	54.8	618.3	-532.2
	Umphang	25.3	1.0	277.9	29.5	652.3	-375.3
	Phitsanulok	28.6	0.5	265.0	17.4	752.8	-110.6
	Lom Sak	27.8	0.5	228.7	30.6	777.5	34.9
	Phetchabun	28.2	0.9	166.0	-33.0	731.9	-86.0
	Wichian Buri	28.4	0.3	276.7	67.5	704.8	-113.5
Kamphaeng Phet	29.0	1.2	85.9	-84.6	369.3	-426.1	
Northeast	Nong Khai	28.0	0.5	661.7	338.5	1502.0	261.4
	Loei	27.5	0.4	262.1	77.2	782.9	-71.0
	Udon Thani	28.0	0.2	312.9	27.8	904.4	-171.2
	Nakhon Phanom	27.3	0.3	363.2	-217.1	1069.2	-875.9
	Sakon Nakhon	27.4	0.0	268.5	-89.4	1011.9	-313.9
	Mukdahan	27.7	0.4	286.0	-64.7	770.0	-381.8
	Khon Kaen	27.7	0.0	244.3	27.9	777.6	-99.5
	Kosum Phisai	28.5	0.5	252.4	20.5	930.4	39.9
	Roi Et	28.3	0.4	280.4	28.2	766.0	-231.6
	Chaiyaphum	28.3	0.7	190.6	-5.6	780.0	32.9
	Ubon Ratchathani	28.0	0.4	283.1	-20.2	960.4	-180.8
	Tha Tum	28.4	0.2	184.1	-43.8	579.1	-397.5
	Surin	28.1	0.5	209.3	-46.9	820.5	-197.5
	Nakhon Ratchasima	28.6	0.5	236.1	78.9	906.2	235.9
Chok Chai	28.3	0.4	198.1	44.6	692.2	25.9	
Nang Rong	28.0	0.2	224.6	42.9	998.6	218.8	
Central	Nakhon Sawan	29.3	0.9	153.5	-24.8	474.6	-252.7
	Bua Chum	28.6	0.6	253.1	83.9	593.4	-88.3
	Lop Buri	29.1	0.8	181.1	30.2	543.2	-125.1
	Suphan Buri	29.4	0.9	75.0	-43.4	393.3	-111.2
	Thong Pha Phum	27.3	1.0	315.7	-28.0	846.5	-496.2
	Kanchanaburi	29.4	1.0	58.4	-39.9	474.9	-87.0
	Bangkok Airport	29.3	0.5	196.4	25.5	837.2	-17.8
	Bangkok Metropolis	29.4	0.6	288.2	68.9	901.6	-64.4
East	Prachin Buri	28.9	0.6	290.8	-67.7	836.9	-439.4
	Kabin Buri	28.2	0.5	294.0	3.6	917.0	-189.0
	Aranyaprathet	28.7	0.9	170.1	-38.5	764.5	-113.5
	Chon Buri	29.5	0.5	169.3	15.2	824.8	61.3
	Ko Sichang	29.2	0.5	164.2	27.4	721.5	48.0
	Pattaya	28.9	0.5	71.7	-25.9	582.0	-27.5
	Sattahip	29.2	0.4	87.1	-21.9	773.9	72.7
	Rayong	29.2	0.4	72.1	-60.2	1018.9	142.0
	Chanthaburi	28.2	0.7	435.1	-62.1	1740.1	-397.6
	Khlong Yai	27.5	0.5	589.6	-450.8	2271.5	-1421.0
South (East Coast)	Phetchaburi	29.4	0.8	61.0	-31.3	366.5	-83.4
	Hua Hin	29.1	0.6	41.5	-29.7	331.4	-148.0
	Prachuap Khiri Khan	28.7	0.9	116.9	17.8	544.8	-50.2
	Chumphon	28.1	1.0	127.1	-80.4	934.9	-96.7
	Surat Thani	27.6	0.6	153.2	13.6	794.0	56.1
	Ko Samui	28.7	0.5	156.3	45.4	901.3	89.6
	Nakhon Si Thammarat	28.3	0.5	109.0	-20.8	1139.3	190.3
	Songkhla	28.5	0.3	245.1	135.7	781.1	99.0
	Hat Yai Airport	27.8	0.4	61.6	-51.4	625.4	-131.0
	Pattani Airport	28.0	0.5	315.1	181.1	1200.3	483.4
Narathiwat	28.3	0.9	141.1	-17.2	895.3	-7.8	
South (West Coast)	Ranong	27.7	0.9	520.5	-268.6	1543.8	-1255.8
	Takua Pa	27.9	0.5	267.8	-277.2	1840.4	-401.3
	Phuket	29.2	1.1	192.2	-94.6	1357.8	69.4
	Phuket Airport	28.8	0.8	178.5	-151.3	1438.6	-8.7
	Ko Lanta	28.8	0.6	180.2	-124.0	1422.8	104.6
	Trang Airport	27.9	0.9	180.3	-94.8	936.9	-291.7
	Satun	28.3	0.9	60.4	-198.9	1263.0	-38.7
	Over the area	28.2	0.6	240.7	-0.2	869.5	-131.5
					0%		-13%

- NOTES :
- 1) Mean temperature is the average of daily dry-bulb temperature
 - 2) "T" is trace, rainfall amount less than 0.1 mm.
 - 3) "blank" is incomplete data.
 - 4) Temperature and rainfall are preliminary data.

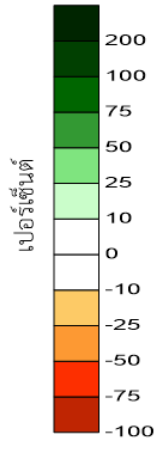


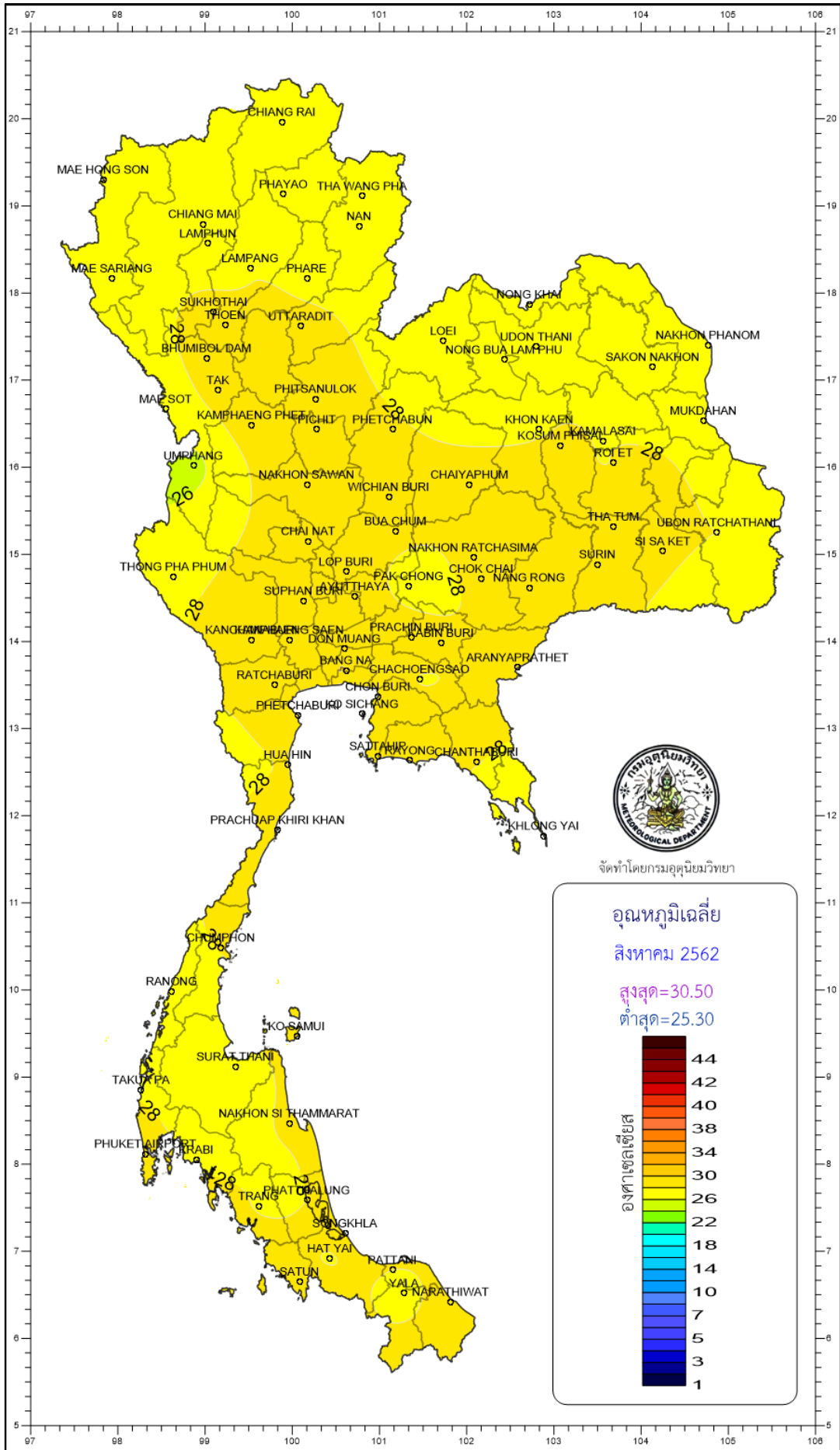
จัดทำโดยกรมอุตุนิยมวิทยา

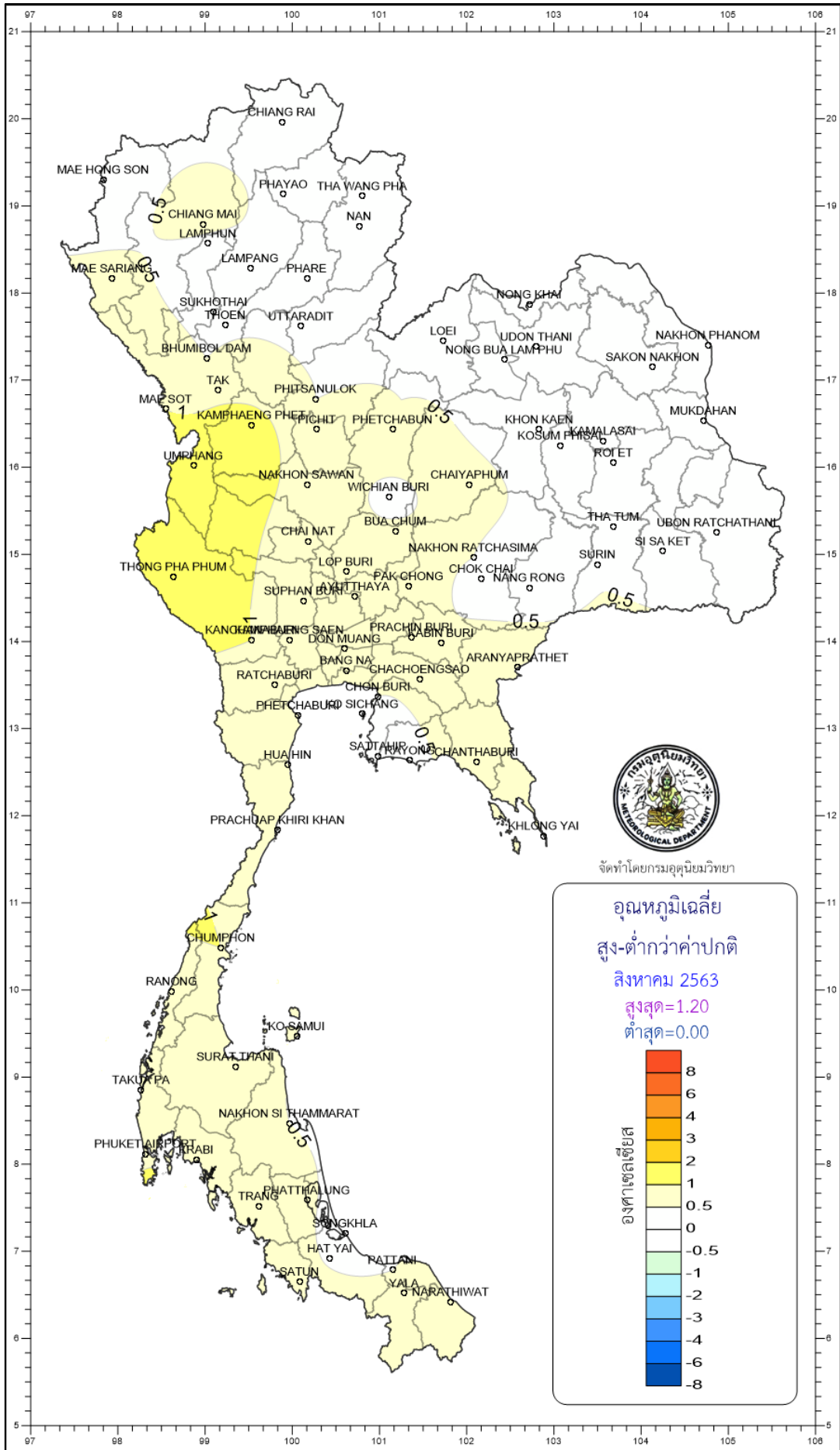


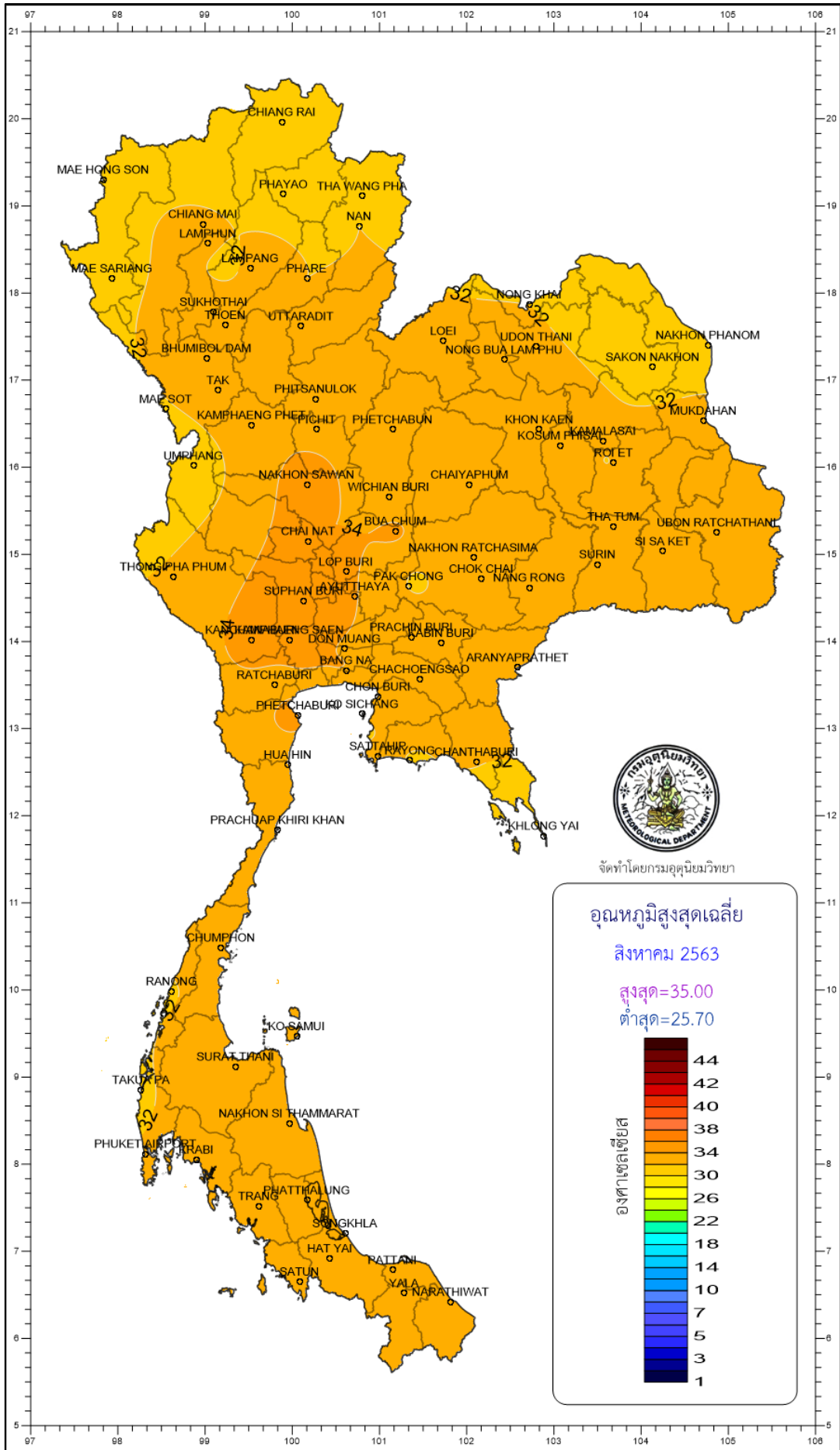
จัดทำโดยกรมอุตุนิยมวิทยา

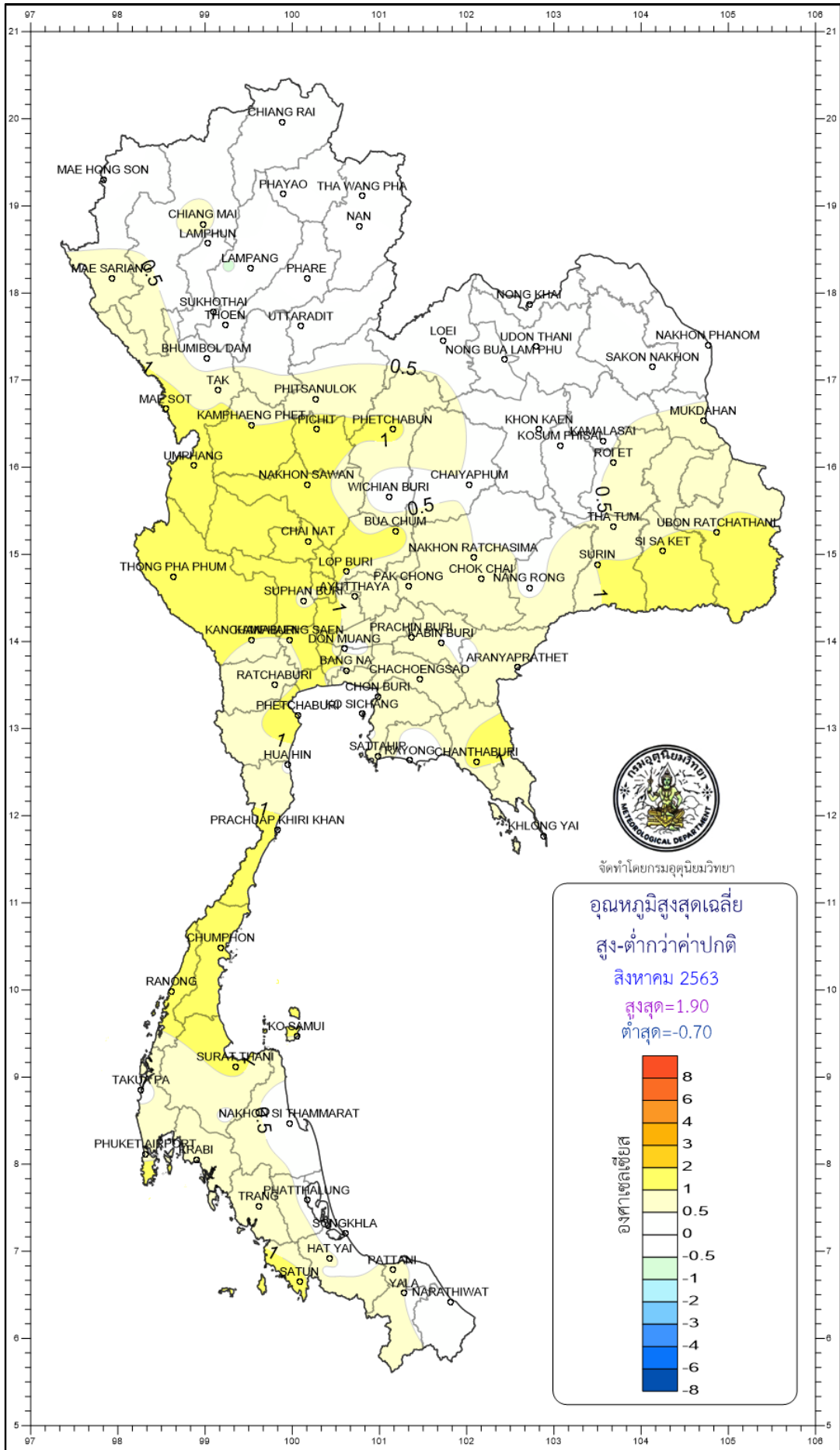
ปริมาณฝนรวม
สูง-ต่ำกว่าค่าปกติ
สิงหาคม 2563
สูงสุด=142.60
ต่ำสุด=-76.70











จัดทำโดยกรมอุตุนิยมวิทยา

